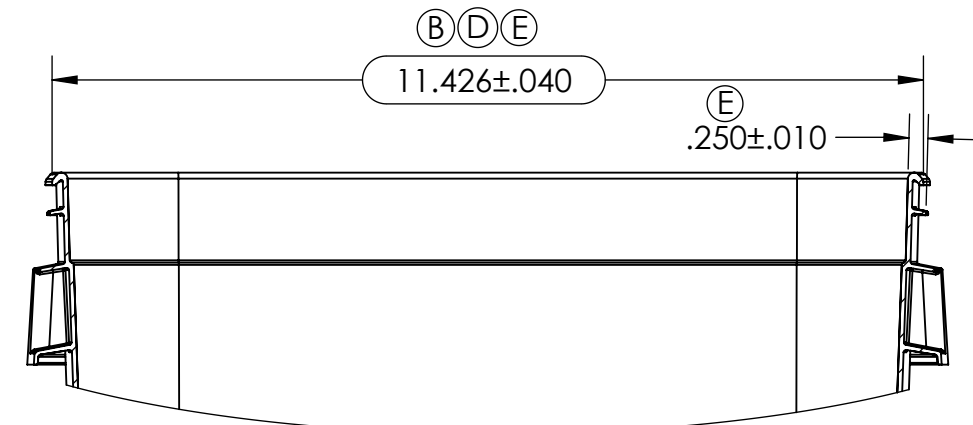
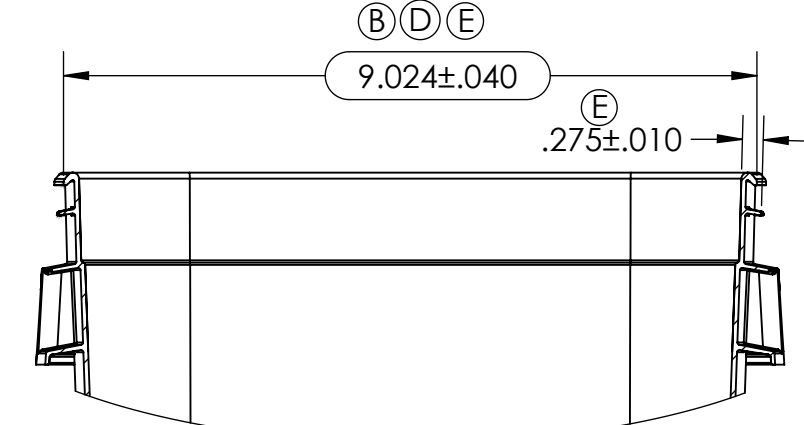


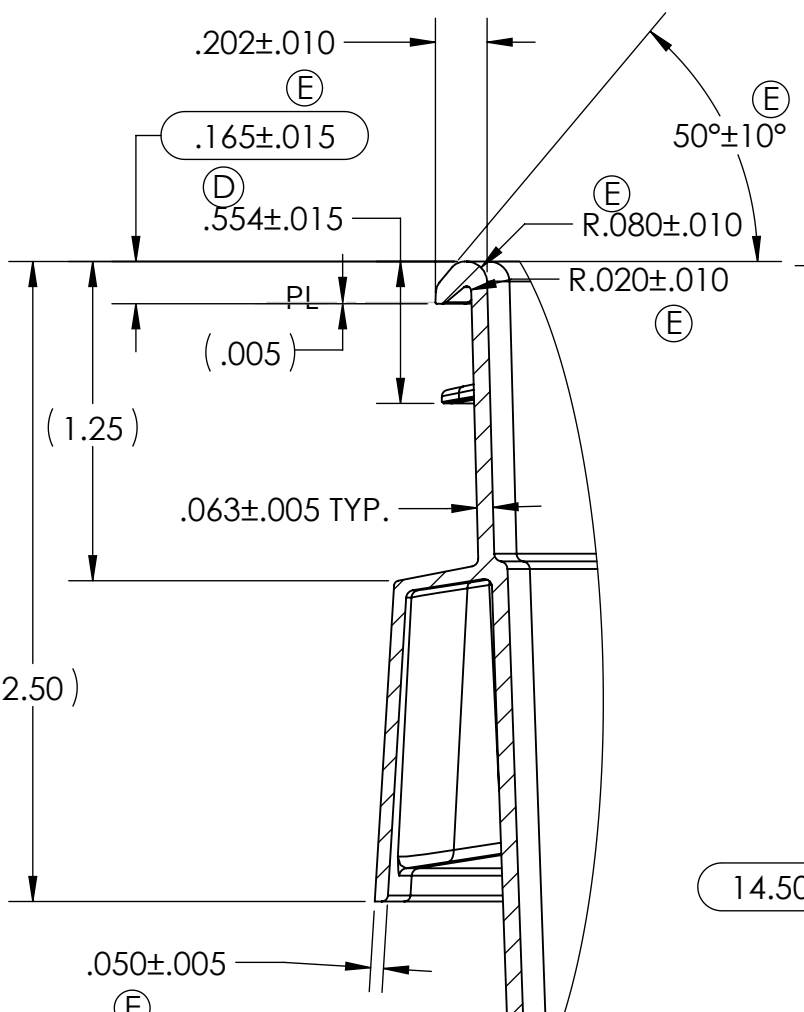
| REVISIONS | | | |
|-----------|--------------------------------------------------------------------------------------------------------------------------------------------------------------------------------------------------------------------------------------------------------------------------------|------------|----------|
| REV. | DESCRIPTION | DATE | APPROVED |
| A | RELEASED FOR PRODUCTION | 11/15/18 | CH |
| B | TOP DETAIL VIEW ADDED, .62 ADDED / STACK RIBS MOVED TO CORNER AND MADE PARALEL (4 PLCS.), STACK RIB DRAFT .5 DEGREE ADDED ~.25 DEGREE (2PLCS)(8 RIBS), RIBS ADDED .62 (2 RIBS / 4 PLCS.), BAIL INSERT COUNTER SUNK, FINISH #400 EMORY ~ DRAW POLISH, 9.029 ADDED, 11.346 ADDED | 6/17/2019 | CH |
| C | RADII INCREASED R.060 ~ R.040, .24~.25, RADII INCREASED R.035~R.025, SECTION R-R ADDED | 6/28/2019 | CH |
| D | BOTTOM DETAILS THICKENED TO IMPROVE DROP TESTING, .094~.084, R.060~R.040, .073~.063, R.045~R.035, LOCK REDUCED TO STEEL SAFE DIMENSION (OAL .100, OAW .050), .554~.561, 2.475~2.485, ± .025~.010 | 12/26/2019 | CH |
| E | TOLERANCING ADDED/ADJUSTED FOR PROCESS VALIDATION, DIMS ADDED, 11.426~11.346, 9.029~9.024 | 2/24/2020 | CH |
| F | NO CHANGES TO PART GEOMETRY. RE-DRAWN ON SSP TITLE-BLOCK. | 5/23/2022 | RAM |



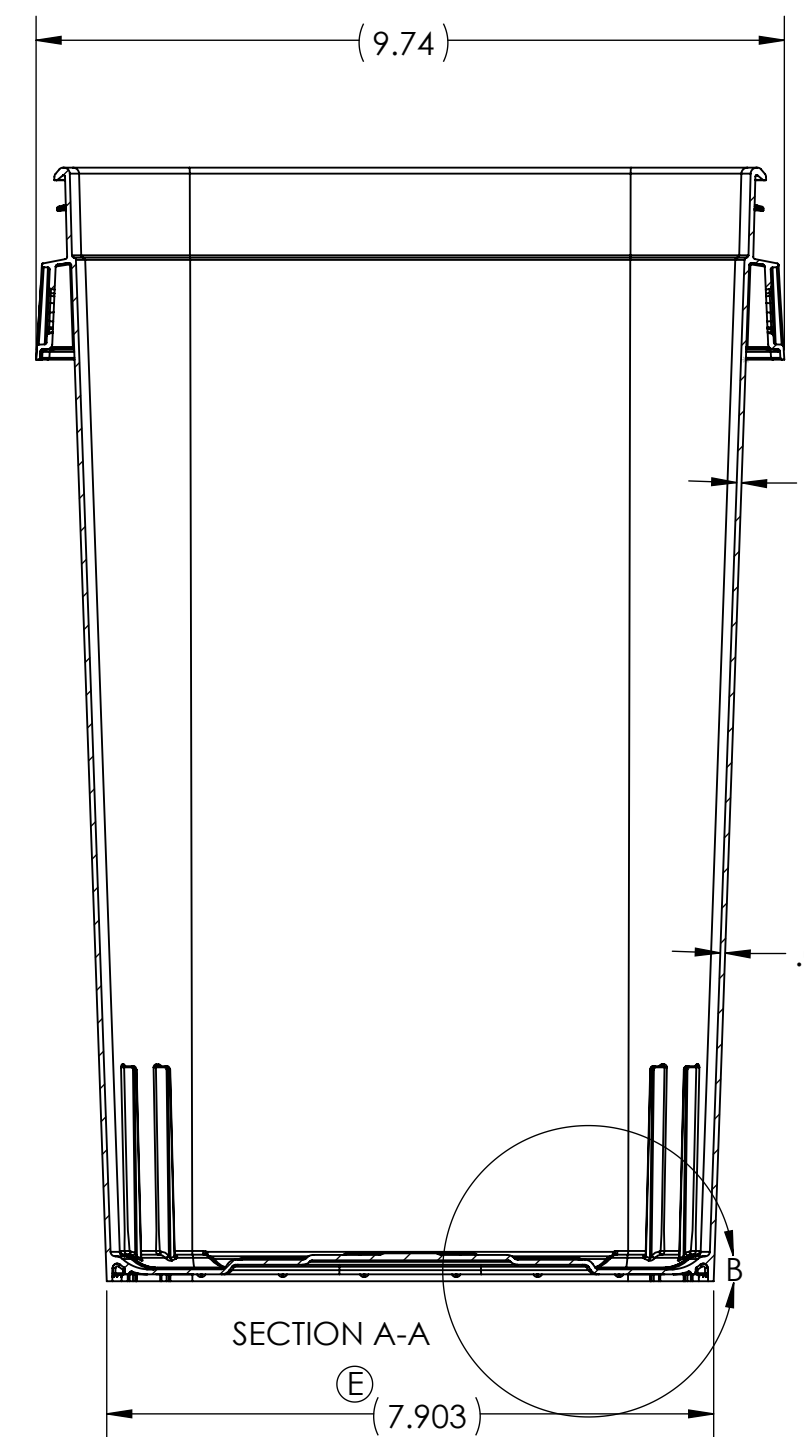
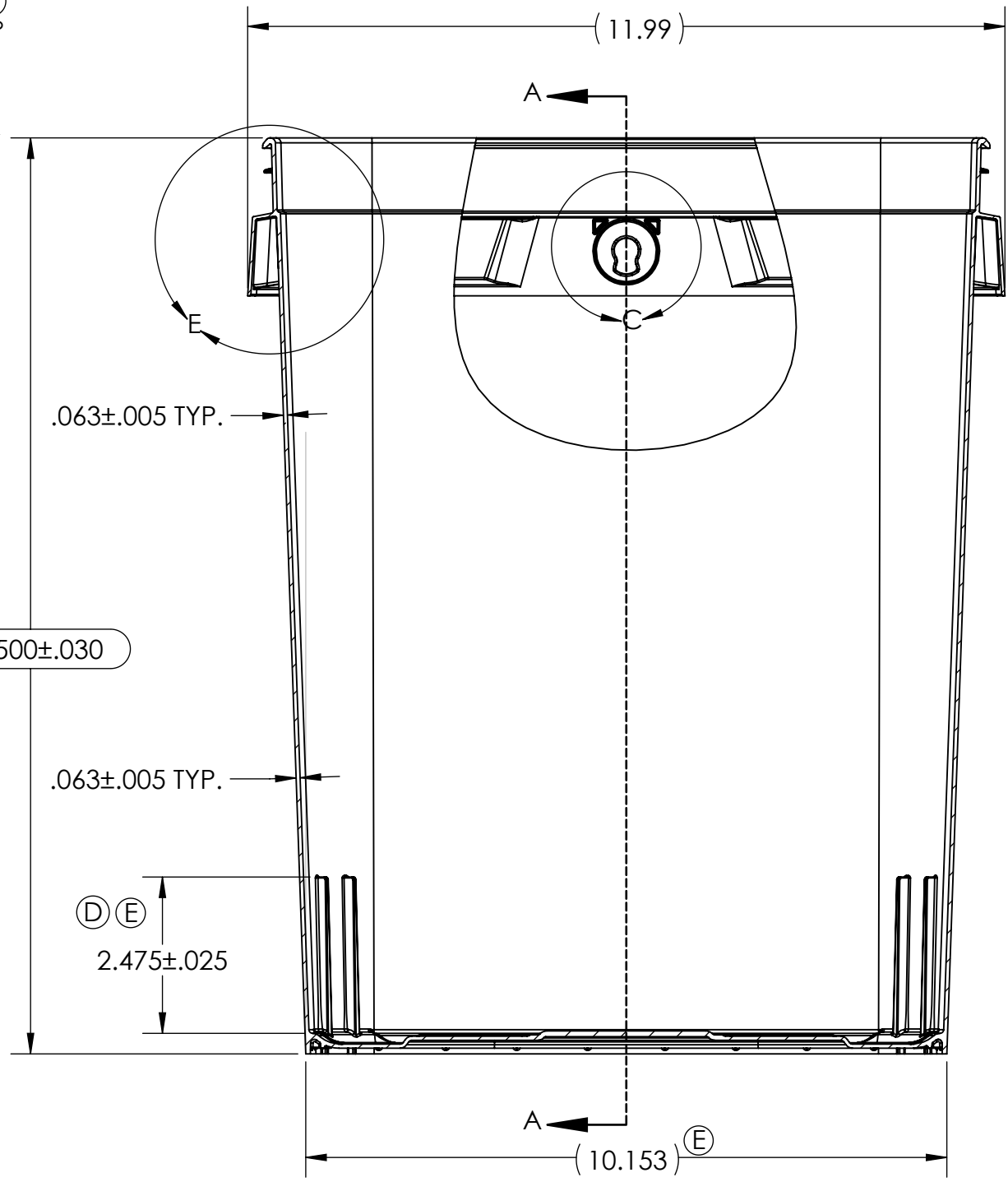
TANGENT SECTION F-F



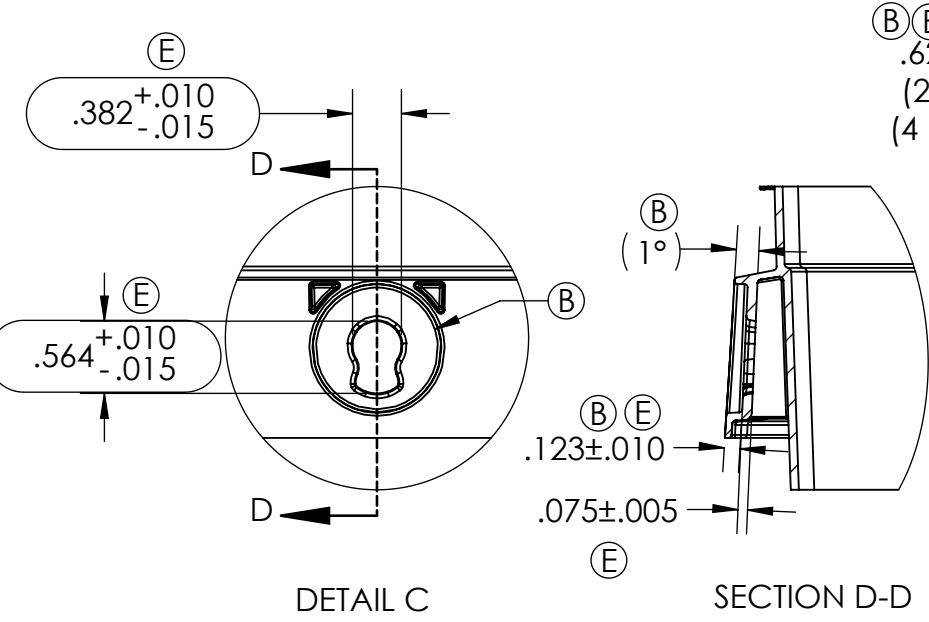
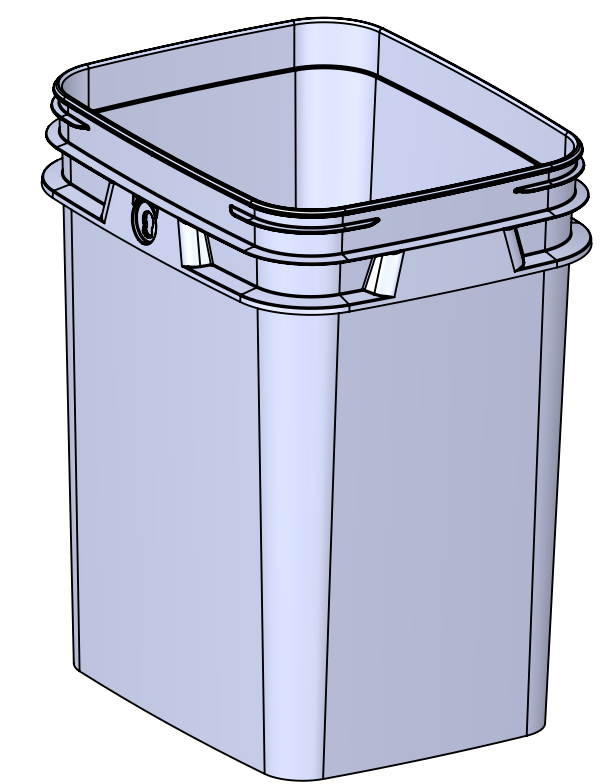
TANGENT SECTION G-G



DETAIL E

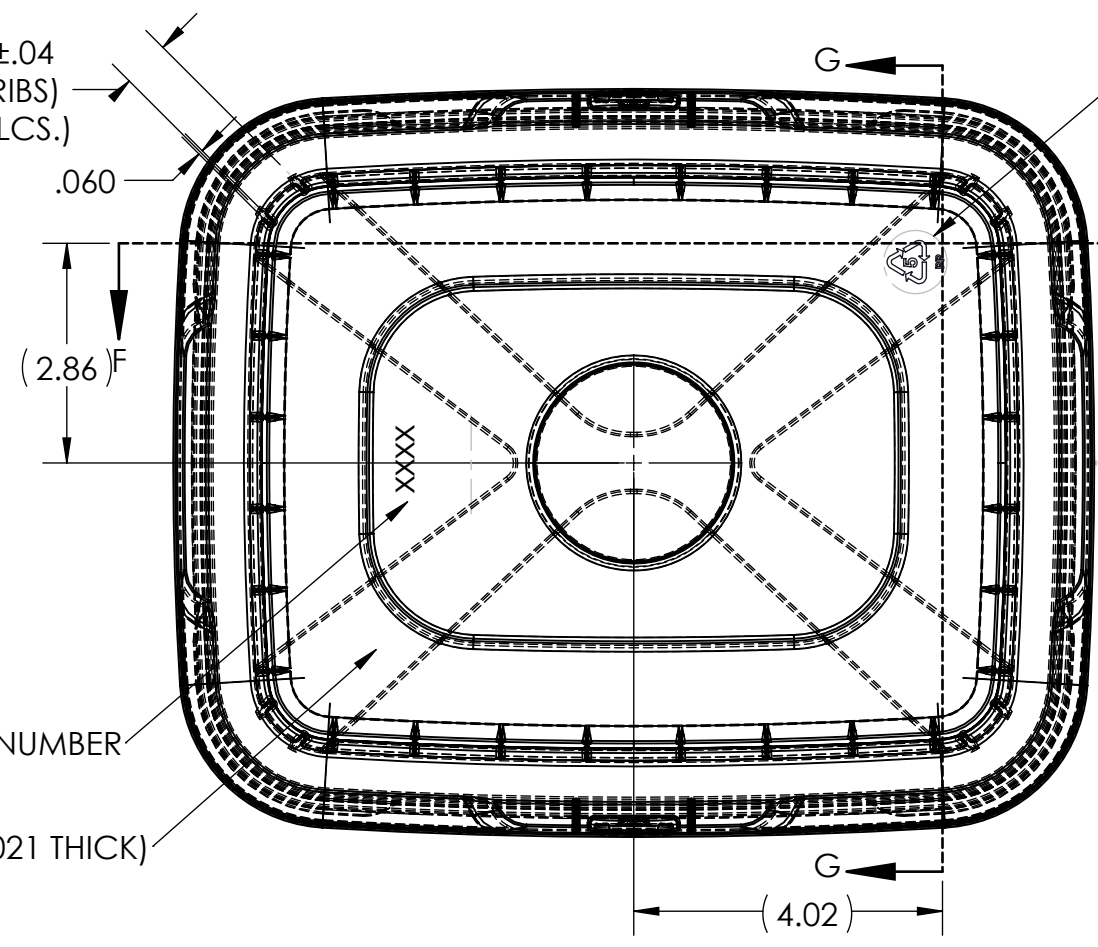


SECTION A-A



DETAIL C

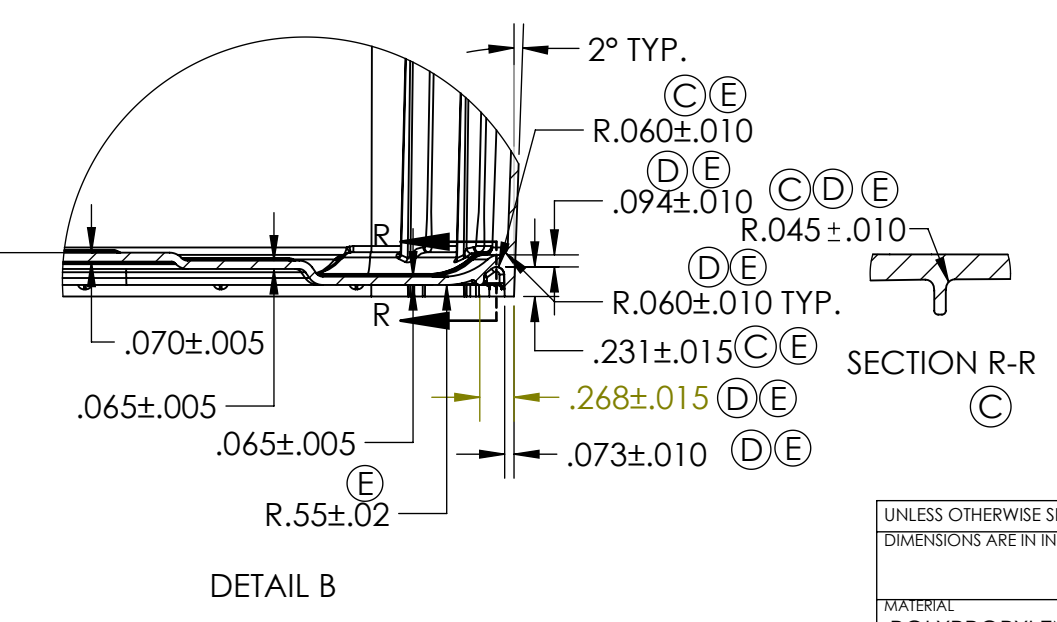
SECTION D-D



RECYCLE LOGO

MOLD NUMBER

(FLOW LEADER .021 THICK)



DETAIL B

SECTION R-R

NOTES
OVERFILL VOLUME: 5.4 GAL
NOMINAL VOLUME: 5 GAL
WEIGHT: 610g +/- 10g

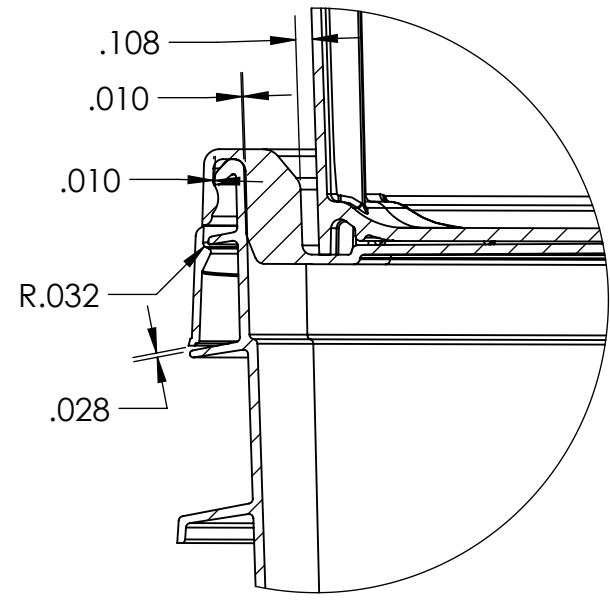
MOLD FINISH NOTES:
(B) CORE - #400 EMORY / NO PLATING ON CORE CAP CAVITY - ALL EXTERNAL A3 #2 RIB & CORNER LOCK - #600 PAPER

| | | | | | | | |
|---------------------------------------------------------|-----------|----------------------------|-----------|-----------------------------------------|--------------------------|--------------|----------|
| UNLESS OTHERWISE SPECIFIED: DIMENSIONS ARE IN INCHES | NAME | SILGAN SPECIALTY PACKAGING | | 5650 W COUNTY LINE RD. MEQUON, WI 53092 | | | |
| MATERIAL POLYPROPYLENE | DRAWN | CH | CHECKED | CH | TITLE: 17LB CONTAINER | | |
| COMMENTS: | ENG APPR. | CH | MFG APPR. | TP | SIZE | PROJECT NO. | REV |
| | Q.A. | JE | | | C | B108-001 | F |
| DO NOT SCALE DRAWING | | | | | NOT TO SCALE | SHEET 1 OF 2 | |

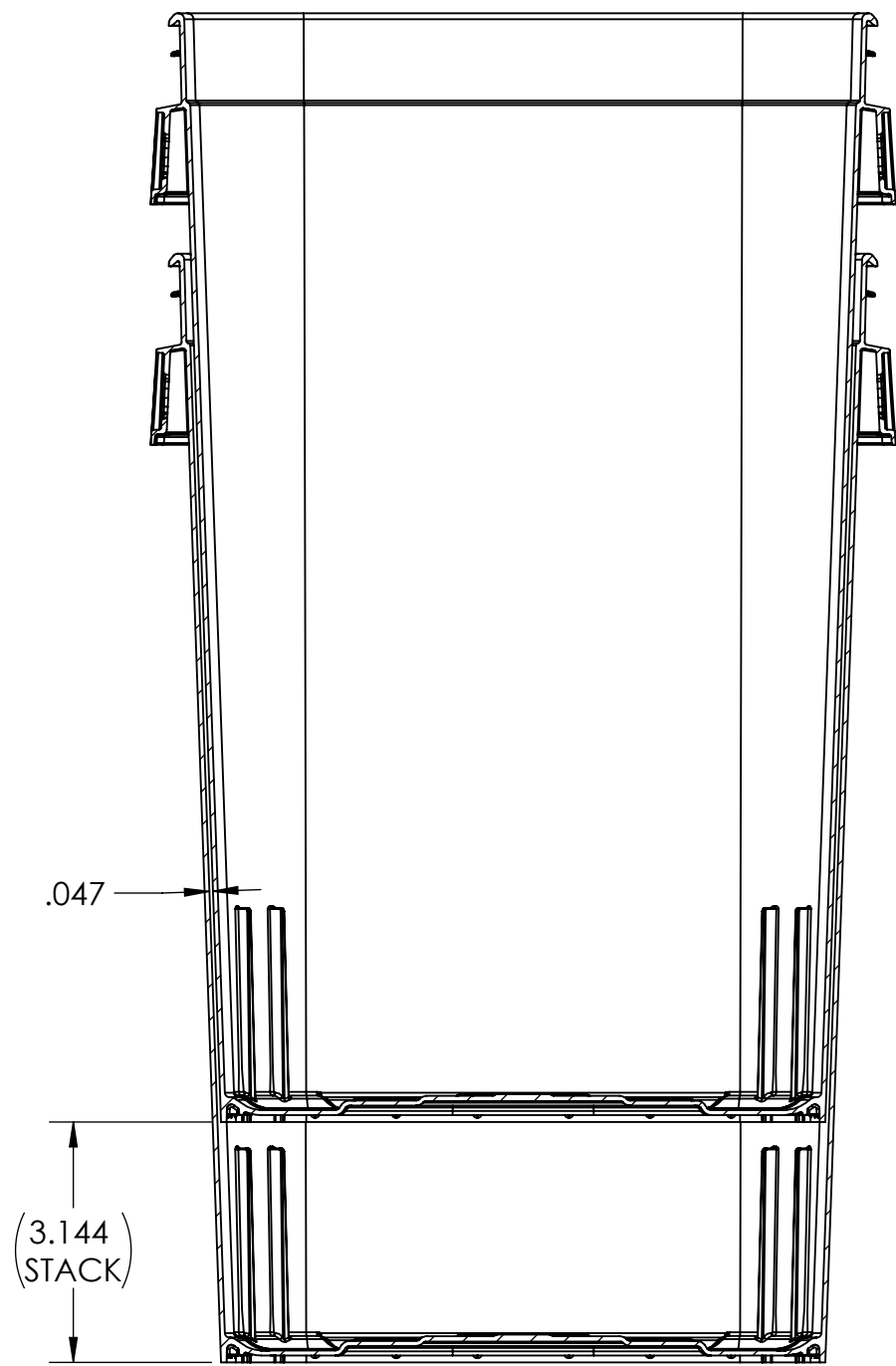
PROPRIETARY AND CONFIDENTIAL
THE INFORMATION CONTAINED IN THIS DRAWING IS THE SOLE PROPERTY OF SILGAN SPECIALTY PACKAGING. ANY REPRODUCTION IN PART OR AS A WHOLE WITHOUT THE WRITTEN PERMISSION OF SILGAN SPECIALTY PACKAGING IS PROHIBITED.

8 7 6 5 4 3 2

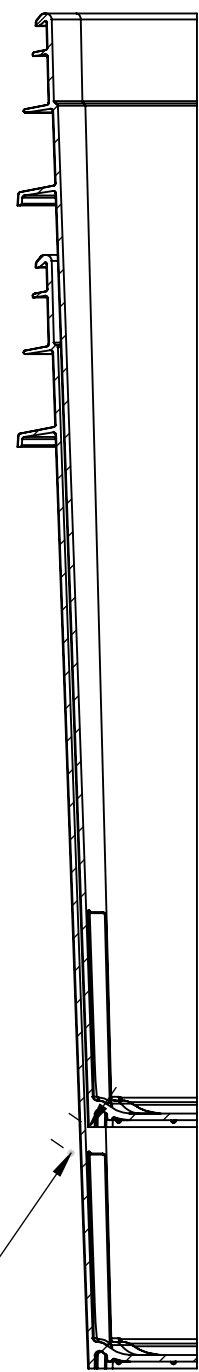
F
E
D
C
B
A



CORNER SECTION




CONTAINER NEST



CORNER SECTION

.035

PROPRIETARY AND CONFIDENTIAL
 THE INFORMATION CONTAINED IN THIS DRAWING IS
 THE SOLE PROPERTY OF SILGAN SPECIALTY
 PACKAGING. ANY REPRODUCTION IN PART OR AS A
 WHOLE WITHOUT THE WRITTEN PERMISSION OF SILGAN
 SPECIALTY PACKAGING IS PROHIBITED.

| | | | |
|---------------------------------------------------------|-----------------|-----------------|--------------------------------------------------------------------------------------------------------------------------------------|
| UNLESS OTHERWISE SPECIFIED: DIMENSIONS ARE IN INCHES | DRAWN CH | NAME CH |  5650 W. COUNTY LINE RD. MEQUON, WI 53092 |
| MATERIAL POLYPROPYLENE | CHECKED CH | ENG APPR. CH | |
| COMMENTS: | MFG APPR. TP | TP | |
| | Q.A. JE | JE | |
| TITLE: 17LB CONTAINER | | | SIZE C |
| PROJECT NO. B108-001 | | | REV F |
| DO NOT SCALE DRAWING | | | NOT TO SCALE |
| | | | SHEET 2 OF 2 |

8 7 6 5 4 3 2 1